

# PLAY!

## MAP



Sunday 20th August

In Chester we take PLAY! very seriously so we've selected some of the very best events and activities for a weekend of PLAY! all culminating with a PLAY date in the City Centre on Sunday 20th August.

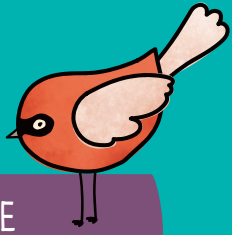
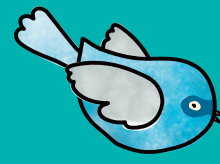
You'll be jumping, skipping, hopping and dancing, singing and noticing things that you've never seen before.

Here's a list of the activities and events taking place over the weekend but if you want to create a Chester play event of your own then go ahead and tag us #ChesterPLAYdate. We hope you'll be able to come out and PLAY! - see you there!

[www.chesterzoo.org/play](http://www.chesterzoo.org/play)



# CHESTER PLAY DATES



LOCATION	ACTIVITY	DATE	TIME
Town Hall Square	Chester Zoo – Play! Boxes	Sunday	10am - 4pm
	What if ?		
	Giant Bubbles		
	Face Painting		
	Outdoor Games - Led by Storyhouse Young Leaders		
	Grace the Golden Eagle		12pm - 1pm
Storyhouse	Silly Storytelling	Sunday	11am - 11.30am
	Fancy Dress	Saturday & Sunday	10am - 5pm
	FOR ADULTS: Beggars Opera after-show party	Saturday	8pm - late
	Silent Disco	Saturday & Sunday	10am - 5pm
	Imaginary World Arts and Crafts (inspired by the film The Chronicles of Narnia)	Saturday & Sunday	10am - 3pm
Grosvenor museum and café	Historic board games	Saturday Sunday	10.30am - 5pm 1pm - 4pm
	Display of gems		
	Giant hopscotch in the corridor		

LOCATION	ACTIVITY	DATE	TIME
Chester Cathedral	Family ARK trail	Sunday	1pm - 6pm
Chester Castle	St George	Sunday	TBC
Grosvenor Shopping Centre	LEGO Brick Adventure	Sunday (ongoing until 1 Sept)	11am - 5pm
St Peter's Church & St John the Baptist Church	Animal discovery trail Special animal themed Sunday Services	Saturday & Sunday	Trail: 10am - 3.30pm Fri, Sat, (Sun St John's only 11am - 2.30pm) & Mon  Sunday church services: St Peter's 10.30am St John's 2.30pm



Don't forget that 19 August is PRIDE with a hugely playful parade and fun activities taking place in Castle Square throughout the day. Go to [www.chesterpride.co.uk](http://www.chesterpride.co.uk) for more information.

All of the information was correct when we produced this but please check [www.chesterzoo.org/play](http://www.chesterzoo.org/play) and the venues own website for more details as things could be subject to change. Huge thanks to Chester Zoo, Storyhouse, CH1ChesterBID, Grosvenor Museum, The Church of England - Diocese of Chester, Big Heritage, Cheshire West and Chester Council, Grosvenor Shopping Centre and the Chester Growth Partnership for making this possible.